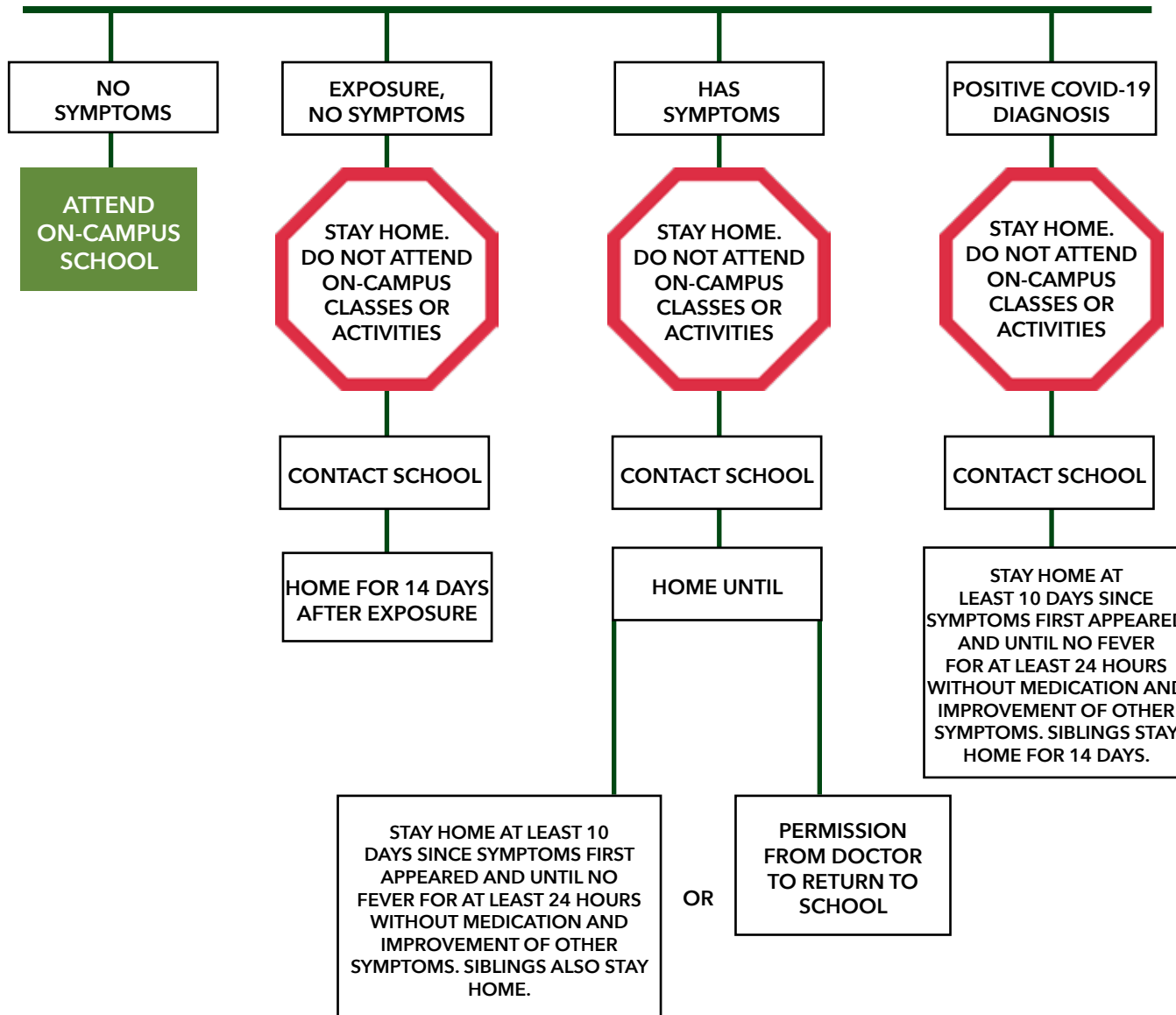


# COVID HEALTH SCREEN FLOW CHART

MAKING THE RIGHT DECISION EACH DAY STARTS WITH THIS DECISION TREE.



## COVID-19 HEALTH DEFINITIONS

### EXPOSURE:

If you have been within 6 feet of an infected person for at least 15 minutes starting from 48 hours before the person began feeling sick until the time the patient was isolated.

### SYMPTOMS:

One of the following:

1. Fever (+100.4) or chills
2. A new cough
3. Shortness of breath

OR

2+ of the following:

1. Gastrointestinal symptoms of nausea, vomiting, or diarrhea
2. A new sore throat
3. New muscle aches
4. New loss of smell/taste
5. Congestion/runny nose

If you answer "yes" to any of these screening questions, we advise you to stay home, isolate, and contact your health care provider.

Report the absence by contacting the school office at (952) 443-4659 or via email at [schooloffice@hfchs.org](mailto:schooloffice@hfchs.org).

Please refer to the decision tree to the left.